



Trusted in New Zealand Since 1982

# INSTALLATION GUIDE

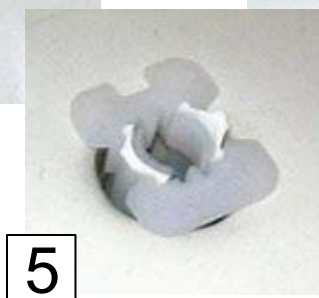
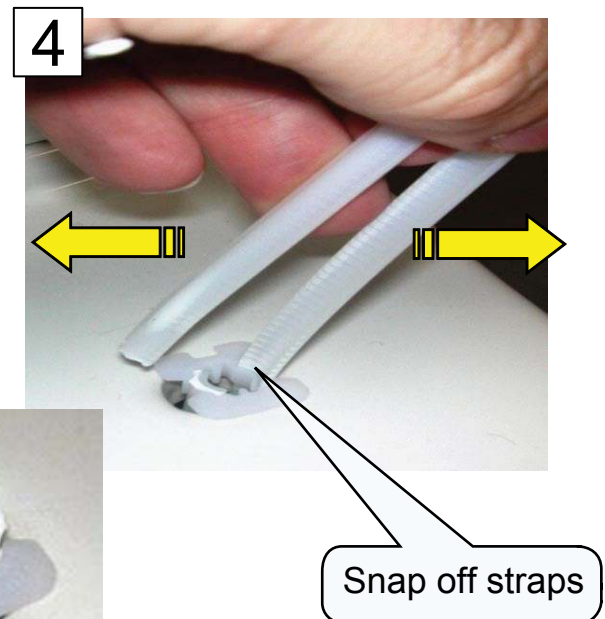
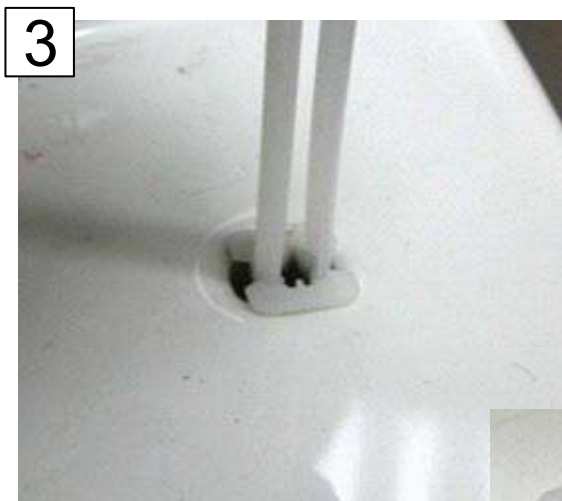
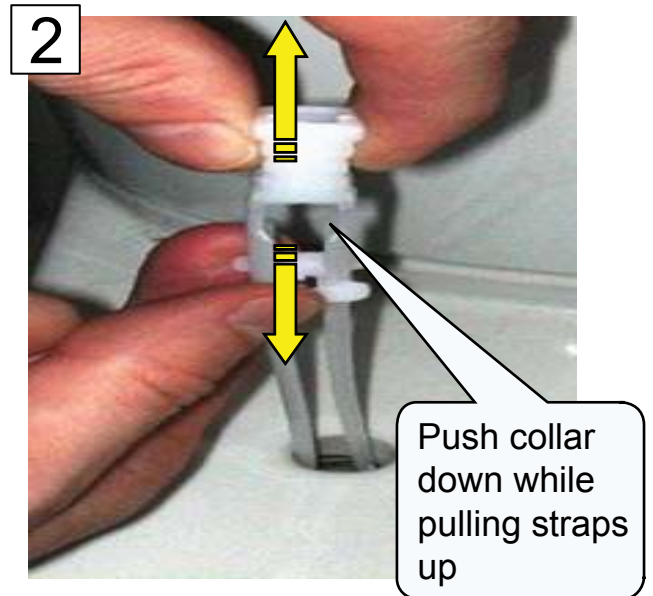
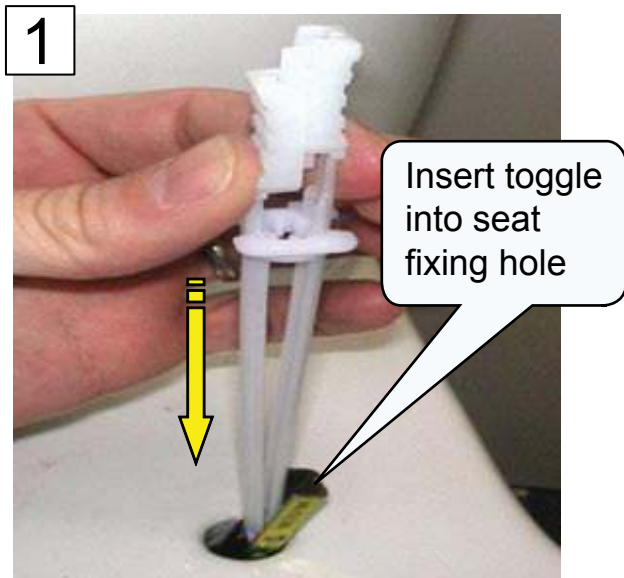
## ENGLEFIELD TOILET SEAT QUICK RELEASE QUIET CLOSE WITH METAL HINGE

Related Products: 98218A Milano, 98219A Tuscano

Thank you for choosing Englefield. We appreciate your commitment to Englefield quality. Please take a few minutes to review this guide before you start installation. If you encounter any installation or performance problems, please don't hesitate to contact us. All information in this manual is based upon the latest

product information available at the time of publication. We constantly strive to improve the quality of our products. We reserve the right to make changes in product characteristics, packaging or availability at any time without notice. Thanks again for choosing Englefield.

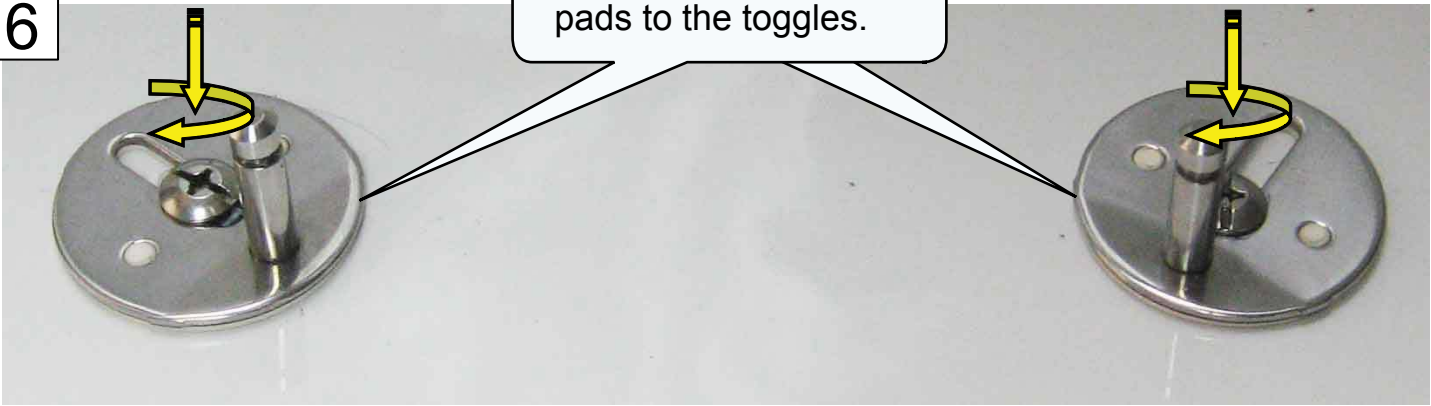
### INSTALLATION



# INSTALLATION

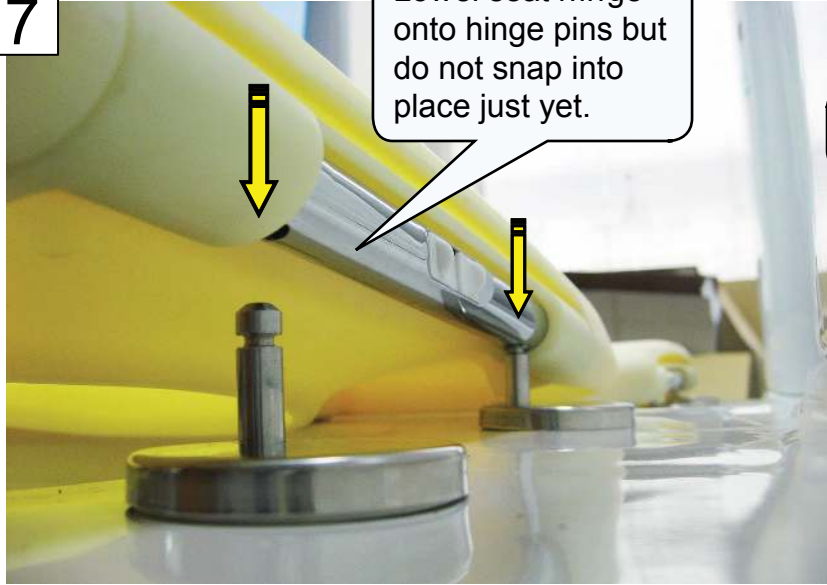
6

Loosely bolt the hinge plates and rubber pads to the toggles.



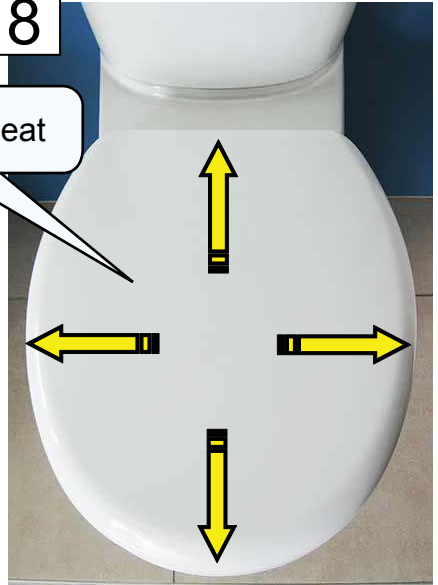
7

Lower seat hinge onto hinge pins but do not snap into place just yet.



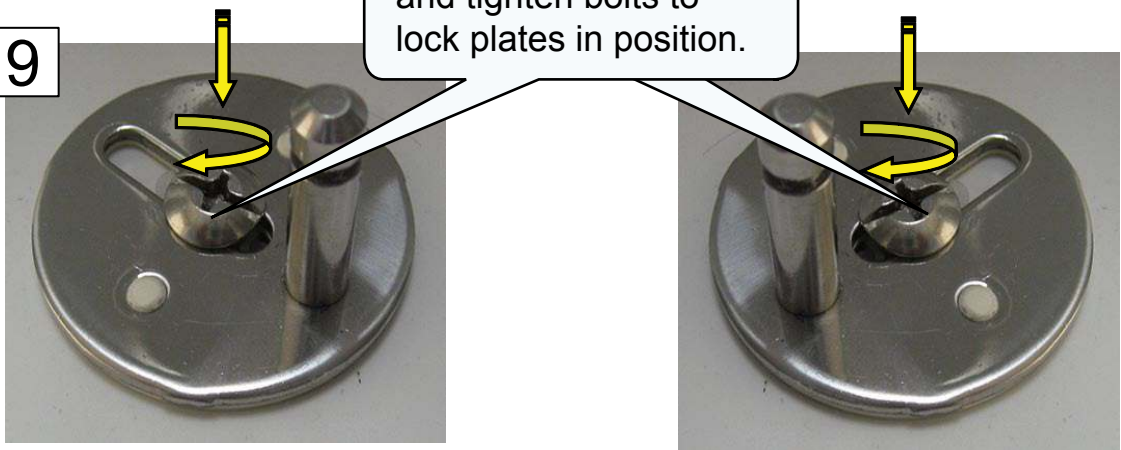
8

Align seat



9

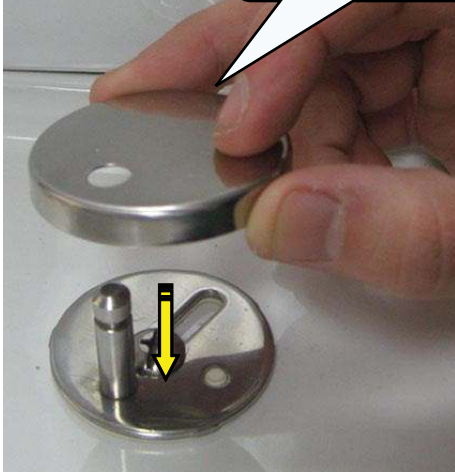
Carefully remove seat and tighten bolts to lock plates in position.



## INSTALLATION

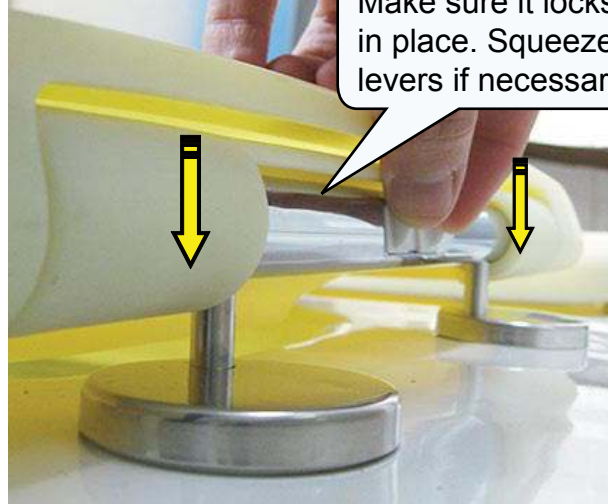
10

Slide hinge caps onto hinge pins and press into place



11

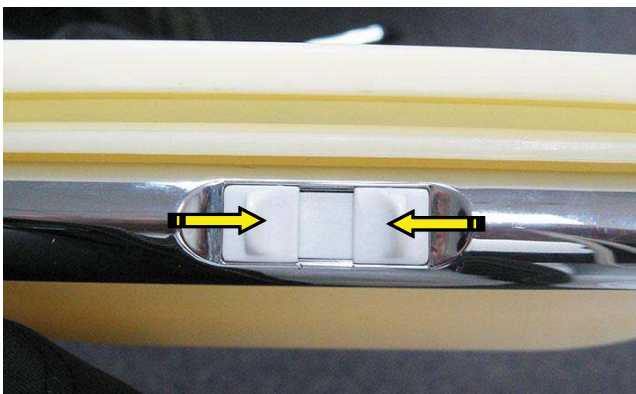
Lower seat hinge onto hinge pins. Make sure it locks in place. Squeeze levers if necessary.



## USER INFORMATION

### REMOVING THE SEAT

To remove the seat unlock it by squeezing the levers together. The seat should now slide up off of the hinge pins.



### SOFT CLOSE OPERATION

To softly close the seat start to lower the seat then release. It will softly close by itself.

